

MICROSCAN®

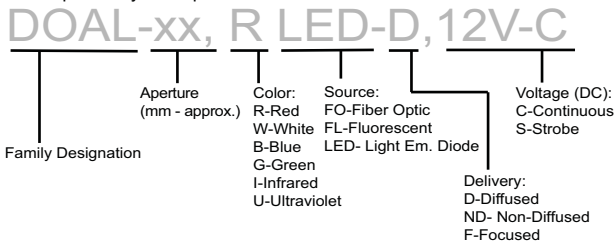
NERLITE® DOAL®-25, RB LED-D, 12V-C

DOAL®-25-LED illuminators provide diffuse, LED illumination in the same optical path as the camera. The DOAL is designed for applications that have flat specular surfaces requiring uniform lighting. This custom version features a combination of red and blue spectrums and a 28 inch power cable with two (2) 4 position MOLEX connectors (one per spectrum).

Model #	Description
NER-010202507CST	DOAL-25, RB LED-D, 12V-C, 28" cbl, (2) 4 POS. MOLEX
010-202509	DOAL-25, RB LED-D, 12V-C, 28" cbl, (2) 4 POS. MOLEX, A/R Cover



Description Key Example



Mechanical:

L x W x H (mm/in.):

84.2 mm x 31.8 mm x 26.9 mm
(3.31 in. x 1.25 in. x 1.06 in.)

Mounting:

Housing Material:

(2) 1/4-20 x 6.4 mm (0.25 in.) deep
Black Anodized Aluminum

Weight:

114 grams (4.0 oz.)

Environmental:

Max. Operating Humidity

95% non-condensing

Operating Temp.

40°C (104°F)

Storage Temp.

50°C (122°F)

Illumination & Electrical:

Lighting Technique:

Diffuse On-Axis

Light Aperture:

25 mm x 25 mm (1.0 in. x 1.0 in.)

Field Of View x Stand-Off¹:

12.5 mm x 12.5 mm (0.5 in. x 0.5 in.)

Light Characteristics:

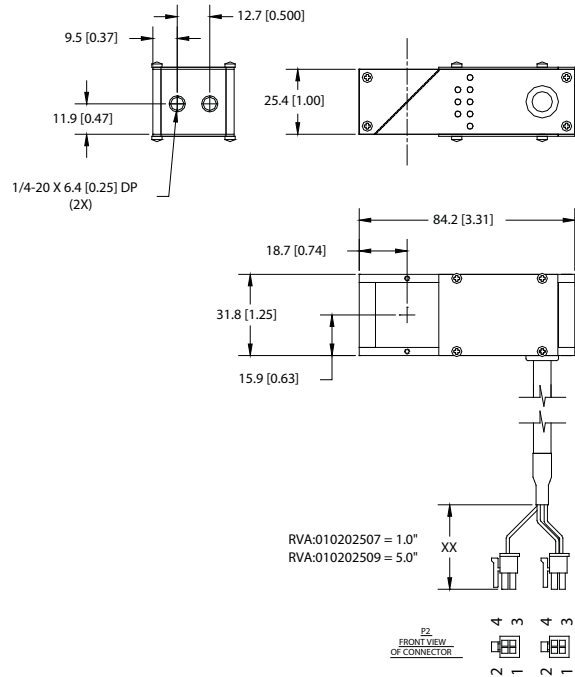
Voltage/Current (max.)

Source	Color (nm)	Exp. Life	12V-C
LED	Red (660)	50k hrs.	45 mA
	Blue (470)	10k hrs.	90 mA

CE Conformity:

Yes

¹Suggested



Cable/Connector:

	Connector	Length	Pin#	1	2	3	4
P1	4 Position MOLEX	0.71 M (28.0 in.)	Shield	GND (Red LEDs)	n/c	+12VDC (Red & Blue LEDs)	
P2	4 Position MOLEX	0.71 M (28.0 in.)	n/c	GND (Blue LEDs)	n/c	n/c	